



# BISON & BLUESTEM

Join Us for a

# Konza Prairie Weekend!

June 4

Prairie People Happy Hour

June 7

Wildflower Walk



## INSIDE

Page 2-3 - Prairie Weekend  
Page 4 - KPBS Director's Report  
Page 5 - FOKP President  
Page 6-8 From the Stone House  
Page 8-9 - Docent Awards  
Page 10 - Docent Spotlight  
Page 11 - Student Research  
Page 12 - Barb Van Slyke  
Page 13 - Vision of the Flint Hills  
Page 14 - Soup and Song  
Page 15 - Follow Along  
Page 16 - Renewing Members

## SAVE THE DATE

Saturday April 25, 10am: K-State Interpretive Walks  
meet at the Nature Trail Visitors Pavilion  
Saturday May 2, 10am-4pm: FOKP at the Flint Hills  
Festival at the Flint Hills Discovery Center  
Thursday June 4, 5pm-7pm: Prairie People Happy  
Hour at Flint Hills Discovery Center  
Sunday June 7, 6:30pm-8:30pm - FOKP Wildflower  
Walk at the Konza Prairie Stone Barn

# SAVE THE DATE



DRINKS / LIVE MUSIC / FAMILY ACTIVITIES / COMMUNITY

**JUNE 4**

**5-7 PM**

**PRAIRIE PEOPLE  
HAPPY HOUR**

**PRAIRIE GARDEN  
TERRACE AT FLINT HILLS  
DISCOVERY CENTER**



ANCIENT OCEAN  
BEEF CO.

RIVER CREEK  
FARMS



Mingle with nature-loving people at the **Prairie People Happy Hour!**

Free event, no membership needed! Bring your friends and come learn more about Konza Prairie while enjoying fun music, refreshments, and the beautiful **Flint Hills Discovery Center Terrace and Prairie Garden.** Children are welcome!

Meet Konza Prairie experts and ask all your prairie questions! See if you can stump a docent! Or just enjoy the fun music and gorgeous views!

Konza Prairie merchandise will be on sale and memberships for the Wildflower Walk.

We cannot wait to see you there!



## Wildflower Walk

Mark your calendars for an evening on the prairie!

### Wildflower Walk

**Sunday June 7**

**6:30pm-8:30pm**

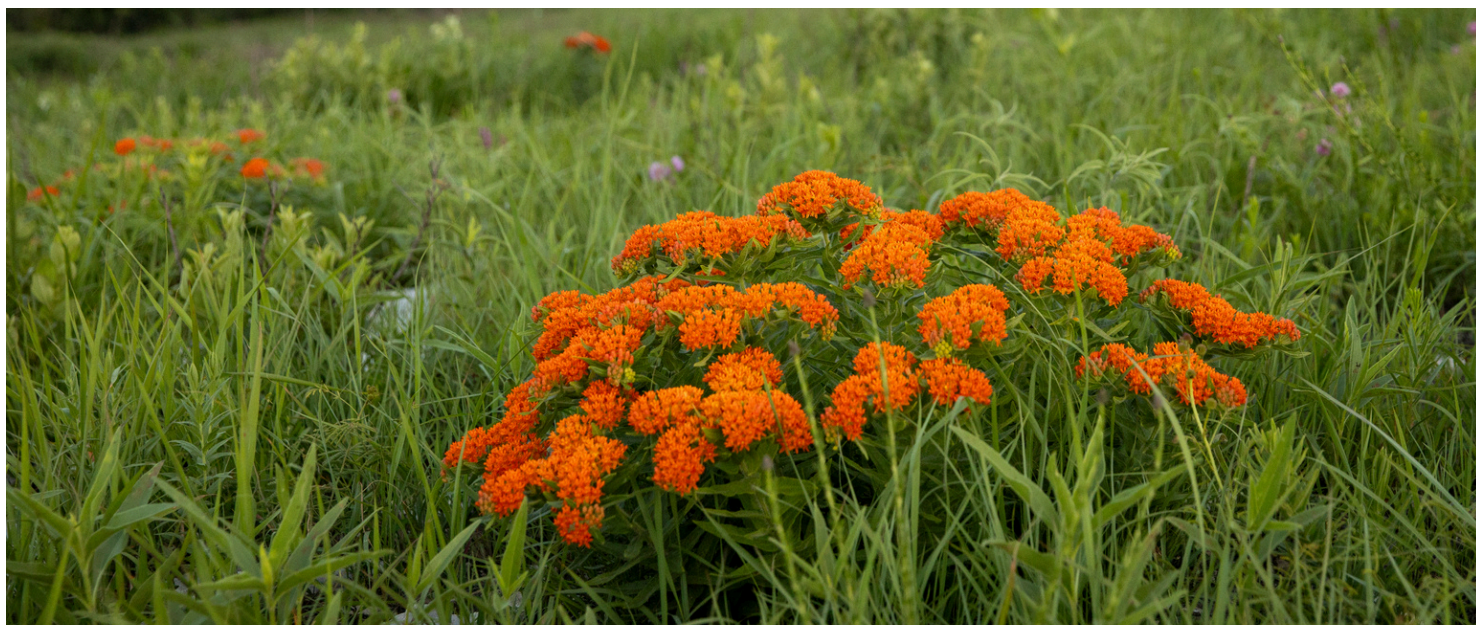
**150 Konza Prairie Lane  
Manhattan, KS 66502**

Join us for a special opportunity at the Konza Prairie Biological Station, where the Konza Environmental Education Program docents and knowledgeable volunteers will guide you through an enriching native plant experience along the exclusive 1.5 mile Butterfly Hill Trail (family-friendly but not stroller-friendly)

This relaxed and immersive walk offers rare access to a trail not open to the general public—available only to members of the Friends of Konza Prairie. Invite your friends and family to become members and share in this memorable experience together.

New This Year: Choose Your Own Adventure!

- Guided Walk: Stroll alongside an experienced docent and enjoy continuous insights about the prairie's unique plant life.
- Self-Paced Exploration: Wander at your own rhythm and visit interactive learning stations to ask questions and explore specific topics of interest.





Dear Friends,

I'm writing to let you know about recent and upcoming personnel changes at the station. First, you may have heard that Barb Van Slyke recently retired from her position as the KPBS Administrative Assistant. Barb served in that position for 27 years and worked closely with four different KPBS directors during her time at Konza Prairie. She also provided a warm welcome and

support to countless researchers and visitors. Be sure to read more about Barb's many contributions to the station in the note of appreciation in this newsletter. I'm also pleased to announce that Christy O'Neal will be serving as the new KPBS administrative assistant. Some of you may already know Christy, who has been assisting with activities at the station for some time. Christy has a background in agriculture and environmental education, prior field research experience, and familiarity with field station operations. Christy is the new point of contact for visiting researchers and others needing assistance with KPBS facilities and site-use logistics. If you have not yet met Christy, be sure to stop by the office to introduce yourself and say hello.

I also want to let you know that there will be a change in station leadership this summer. After 34 years as a faculty member at Kansas State University, including 18 years leading the Konza Prairie Long-Term Ecological Research program and 8 years as the KPBS director, I will be retiring in June. I feel very fortunate I've been able to focus much of my academic career conducting research here at Konza Prairie with exceptional colleagues and collaborators! I also value the opportunity to work with the outstanding staff at KPBS to support the research, education, conservation, and outreach mission of the station. And, of course, I am grateful for the support of the Friends of Konza Prairie. Although I am stepping down as director, you may still find me on campus or at Konza Prairie. I plan to work with the staff and university leadership as we transition to a new station director and will continue to support KPBS in other ways. I look forward to seeing many of you on the prairie and at future FOKP events.





Dear Friends of Konza Prairie,

Spring is beginning to arrive! Soon the grasses will rise, wildflowers will bloom, and the prairie will come alive with the quiet energy of the season. Even in these early signs of renewal, the landscape reminds us why we care so deeply about this place and the work of Friends of Konza Prairie.

There are many ways to connect with the prairie and with one another this season. Prairie People Happy Hour on June 4th provides a relaxed space to gather with friends and share stories. Our Wildflower Walk on June 7th at Butterfly Hill invites participants to explore the prairie closely, taking in growing blooms and the variety of life around them. Both events are opportunities to experience the prairie in new ways, through conversation, observation, or simply pausing to appreciate this remarkable landscape.

We are especially proud of the Konza Environmental Education Program and its work introducing students to the prairie. This dedicated team offers learners the chance to explore, ask questions, and discover the land firsthand. These experiences inspire curiosity, build knowledge, and cultivate a lasting appreciation for the prairie among the next generation.

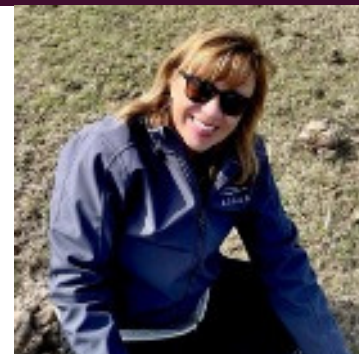
None of this would be possible without the time, energy, and support of our community. Whether volunteering, attending events, or sharing your love for the prairie, your involvement strengthens Friends of Konza Prairie and ensures the prairie continues to be a place of learning, connection, and wonder.

As spring unfolds, we hope you will take time to explore the trails, join in seasonal events, and celebrate both the prairie and the people who make this community so special! Together, we honor the land and the friendships that make the Konza Prairie a place like no other.

With Gratitude, Joy, and Prairie Cheer,  
Sarah Jackson



# Glow-Up 2026



At the end of 2025, the KEEP staff took a collective deep breath and then looked around at the state of the Hulbert Center classrooms. What we saw were some rooms badly in need of a glow-up.

We (Monica Shaffer, Lacey Esau, and myself) started by deep cleaning. We moved things out, purchased some new tables and chairs (thanks to the donors who helped with that!) and gave the south room a much-needed coat of paint. It looked like this:



Before Clean Up



Before Painting



After Painting

We then looked at the wall of white and said: "That wall needs a mural!"

I contacted ex-KSU biology student Noelle Schumann, who had just finished an internship with The Nature Conservancy in Nebraska, and asked if they might be interested in painting a mural in the stone house at Konza Prairie. They answered "Yes, I'd love to!". Noelle, an experienced mural artist, had previously worked on Konza Prairie with Alice Boyle mist-netting birds. They were familiar with KPBS headquarters and were thrilled with the opportunity to paint there.

Lucky for us, Noelle was available in January and February and a schedule was set to have the



Priming on New Years Eve



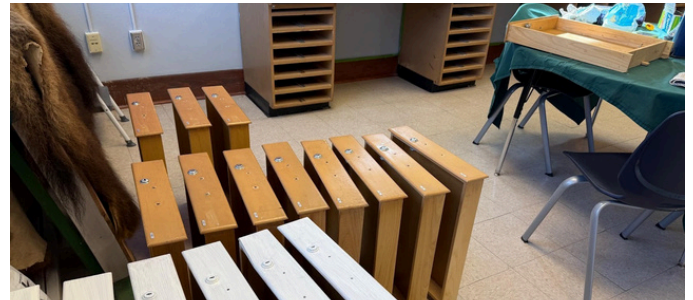
Artist Noelle Schumann

mural completed before spring. We were asked to prime the surface with a gray primer, so we got our paintbrushes back out (this time my very kind husband, Dave Haukos assisted - on New Years Eve, no less):

Noelle worked through the weekend, trying to get as much done before needing to go back to their new job with The Nature Conservancy in Missouri. This is what got done the first weekend:



After Noelle's first round of painting, it became very clear that the beautiful mural would vastly overshadow the rest of the room. We needed to bring the cabinets up to par with a new coat of paint, so there came another job requiring us to get the brushes (and rollers) out again.



Noelle came back two more times to give the finishing details. When you get a chance, come over to the stone house basement and see the results!



*Special **THANK YOU**  
to the donors who  
funded the KEEP  
classroom mural:*

**Mike & Connie Butler  
Miriam Edelman  
Cindy Jeffery  
Jeff Petersen  
Bill Powers  
Ken Stafford  
Mollie Wold**

## Final Konza Prairie Mural Project!



## Docent Awards



New Master Docents (L to R) Sue Ann Wright, Jeff Petersen, Terry Olson, and Dave Hodgson



2025 Most Active Docents (L to R): Ken Stafford, Dave Hodgson, Kip Lee (not pictured: Don Garwood, Sandy Richard)

It's no secret that the volunteer docents form the backbone of the Konza Environmental Education Program. We simply could not do our programming without this core group of amazing people!

With that in mind, every year we celebrate those individuals who spent the most time with us sharing their knowledge and passion for the prairie with visiting school groups.

Those docents with the highest number of hours donated to KEEP in 2025 were (in alphabetical order):

Colleen Alexander	Dave Hodgson	Terry Olson	Jacque Staat
Earl Allen	Kathy Hund	Jeff Petersen	Ken Stafford
Mary Breneman	Susan Kamphaus	Bill Powers	Stacy Stewart
Leslie Campbell	Jim Koelliker	Bharat Ratra	Mary Sutton
Miriam Edelman	Retta Kramer	Mitzi Richards	Sarah Swain
Don Garwood	Kip Lee	Deb Rodenbaugh-Schaub	Deb Williams
Mike Haddock	Amber Myers	Kraig Roozeboom	Mollie Wold
Susan Hazelbaker	Dick Oberst	Chris Shoults	Sue Ann Wright
Chris Herald	Jan Olewnik	Gerry Snyder	

Special thanks and awards went to:

- Keeper of the Phenology List: Jacque Staats
- Organizers of the weekly docent hike: Retta Kramer & Terry Olson
- Dogwood control on Nature Trail Bharat Ratra
- Docents active on FOKP board: Conni Briggs, Kathy Hund, Amy Meng, Amber Myers, Mollie Wold, Mike Haddock
- 2025 New Docents: Leslie Campbell, Amber Myers, Bill Powers, Mitzi Richards, Colleen Alexander, Kraig Roozeboom, Deb Rodenbaugh-Schaub, Deb Williams
- 2025 Docent Trainees of the Year: Kraig Roozeboom, Deb Williams
- New Master Docents: Dave Hodgson, Terry Olson, Jeff Petersen, Sue Ann Wright
- Most Active Docents 2025: Don Garwood, Dave Hodgson, Kip Lee, Sandy Richard, and Ken Stafford

We had a wonderful program from Dr. John Blair who spoke about being the Director of the Konza Prairie Biological Station and how it can be a challenge to juggle it all!



KEEP Docents – Back row standing (L to R): Mollie Wold, Mitzi Richards, Ken Stafford, Terry Olson, Stacy Stewart, Jeff Petersen, Mary Sutton, Dick Oberst, Retta Krammer, Kip Lee, Dave Hodgson, Kraig Roozeboom, and Leslie Campbell. Front row seated (L to R): Sue Ann Wright, Jacque Staats, Mike Haddock, Susan Hazelbaker, Earl Allen, Mary Breneman, and Colleen Alexander.



### **What motivated you to become a Konza Prairie Docent?**

Love of Kansas and especially the Flint Hills. I have always thought that Kansas was beautiful and have traveled all around Kansas seeking out her history, hiking her unique sites, and photographing her landscapes. Once I retired, I was searching for volunteer opportunities. I had hiked Konza Prairie many times and wondered about the Hokanson Homestead but didn't explore it too much. I had heard about the Friends of Konza Prairie and even attended their annual meeting a couple years before I retired to learn about the research being done on Konza. When I retired and was looking to volunteer, I read somewhere about the docent program and applied, not thinking I had a chance to become one, because I was aware of Konza's research mission and I had no education or training in agriculture, botany, or biology. But I am good with kids and I like to hike. Fortunately, Jill accepted me into the program, and I am happy she took a chance.

### **What has been the best part of being a volunteer at Konza Prairie?**

The kids and watching them enjoy being on Konza Prairie. Watching the kids' eyes light up as they run through the grass, catch a grasshopper, feel the wind, see a butterfly or bison up close is priceless. I also enjoy how much I have learned about the grasses, flowers, insects, mammals, etc., as the Konza Prairie docent program teaches us these not only so we can share them during the hikes, but also so we can understand the importance of the scientific research being done at Konza. This knowledge has greatly increased my appreciation of the prairie as a living organism which must be conserved.

### **What brings the most joy in your life?**

Right now, besides being out at Konza Prairie, is being with my granddaughters, ages 4 and 2. Even though they live just north of Chicago in a very urban environment, they are being thoroughly indoctrinated about life on the prairie, learning about the flora and fauna, and the importance of conservation.

### **What are some of your hobbies and interests?**

As mentioned, I do enjoy hiking, landscape photography, and Kansas history. Becoming a docent at Konza has allowed me to combine all of these interests, which is wonderful. When I am not out at Konza engaging in these activities, I like to read, watch sports, and travel. I am usually reading 2 or 3 books at once, mostly mysteries, historical fiction, and actual history. For sports, I follow KSU football, WSU men's basketball, KU men's basketball, KSU women's basketball, WSU baseball, WSU softball, and the Chiefs. My interests also include archeology and am a member of the Kansas Historical Society and the Kansas Anthropological Association. I have enjoyed going on digs throughout Kansas with the Kansas Archeological Training Program (KATP) and working in the lab at the Kansas Historical Museum in Topeka. I also have expanded my travels outside of Kansas, traveling to the United Kingdom and Ireland in 2025 and planning a trip to explore Native American sites in northern New Mexico, southern Colorado, northern Arizona and southern Utah in 2026.

## Where are you from?

I'm originally from Aberdeen, South Dakota. I got my bachelor's degree at the University of Minnesota Morris and worked a few years in Minnesota's lovely mosaic of tallgrass prairie and pothole wetlands.

## What inspired you to enter this field of study?

Two undergraduate professors, Drs. Margaret Kuchenreuther and Ed Brands, first introduced me to ecology and showed me prairies from a scientific point of view. After I graduated, I did a State Department exchange year in Germany. I loved comparing cultural perspectives and different grassland ecosystems, but it also convinced me that if I was going to study ecology, I would do so in the prairies where I grew up.



## Was there someone in your life who shared your love of nature or influenced you?

All my grandparents were farmers, and my dad inspired my love of long, rambling walks. My grandparents' pastures themselves were important teachers, where I learned to appreciate individual flowers and sweeping grassland vistas.

## Who is your faculty advisor at K-State?

Dr. Allison Louthan; as a population biologist, her research ranges from Venus flytraps in longleaf pine savannas, to prairie work at Konza, to grasslands in Kenya. It's interesting to work in incredibly different systems, but share the same fundamental questions across the lab: how do plant populations grow or change, and what influences those changes?

## What is your research topic at Konza and how does it fit into the broader science picture?

I'm researching roughleaf dogwood, especially seedlings and young plants. We're building a population model to understand in what scenarios dogwood encroaches on prairies fastest, and what management strategies might be able to slow or reverse that encroachment. It's an interesting piece of broader grassland management because we know there is no silver bullet. No one technique (grazers, fire, mowing, etc.) will control woody encroachment, so we get to research how different management techniques interact with one another and the landscape.



## What is your least favorite thing about Konza?

The scope of woody encroachment and the number of different woody species creeping over the landscape. There are a lot of different woody plants, with different life history strategies, that need to be controlled concurrently.

## What would be your dream job?

I hope to be a land manager, able to care for and restore prairies for a state or federal government or NGO like The Nature Conservancy.

## What do you like to do when you're not in class or doing your research?

I love to bake, read, sew, and hang out with friends. I also try to play some music every week, usually violin or accordion!

# Ode to Barb Van Slyke

## End of an Era

Barb Van Slyke - officially the KPBS Administrative Assistant - but unofficially the heart and soul of KPBS, has retired after 27 years of service with the station.

Regardless of one's role with KPBS, Barb usually was the first person you met when first visiting the site. It was her bright smile and welcoming greeting that let you know that, yes, you were indeed in the right place. She was the one who showed you around, pointing out the parking and meeting areas, and most importantly, where to find the bathrooms.

Barb, who is married to Tom Van Slyke, the KPBS site manager for 24 years, has been connected with Konza Prairie since 1993, but came to work for the site in 1999. Since that time, she has forged deep alliances, not only with the vast number of researchers, technicians, student workers, and docent volunteers that have come and gone throughout the years, but also with the prairie itself.

The tallgrass prairie is an amazing ecosystem, one that is constantly changing. Barb came to know and recognize those subtle changes and sought to capture those nuances with her preferred tool, the camera. Barb's favorite prairie subjects were fire and bison. During the spring fire season, you could count on Barb being there to capture every smoke-tornado and massive head fire. She also loved being around when the bison mamas were calving. Getting a photo of a brand-new bison calf was her reward!



Recently, Barb and Tom have downscaled and simplified their lives and are living near family in Olathe, KS. However, they are still within easy driving distance of Konza Prairie and I expect to see Barb on the prairie, with camera in hand, most any time this spring. Thank you Barb, for giving your heart and soul to Konza Prairie!

**Fireflow by Barb Van Slyke**

## Benefit Art Show

The 2026 Visions of the Flint Hills Benefit Art Show (benefitting the Friends of Konza Prairie) is scheduled for September 30th - December 9th at the Buttonwood Art Space, Kansas City, MO, and [buttonwoodartspace.com](http://buttonwoodartspace.com)

This show has become the largest fundraiser for FOKP, raising funds for the support of student programming at Konza Prairie, as well as showcasing the works of area artists who draw their inspiration from the beauty of the Flint Hills. If your piece sells, then 50% of the income will go to FOKP!

If you are a painter, photographer, sculptor, mixed-media, or jewelry artist and your art reflects the Flint Hills beauty in some way, this show is for you!



Painting: "Konza: Sun and Shadows" - by Jo Fey



Painting: "Looking Back Toward Home" - by Susan Geiger

**Consider  
Sharing Your  
Work!**

Visions of the Flint Hills

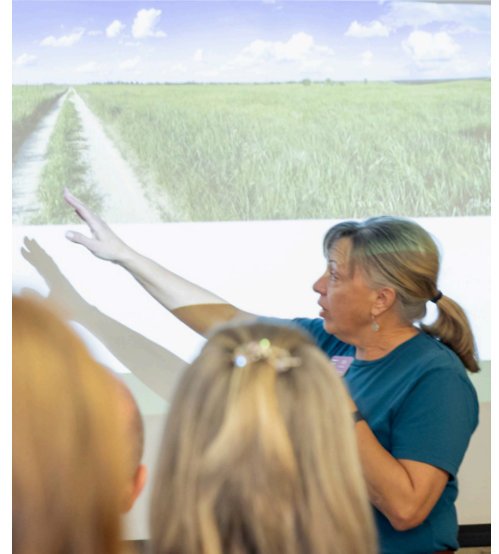
**September 30th-  
December 9th**

Buttonwood Art Space  
Kansas City, MO  
[buttonwoodartspace.com](http://buttonwoodartspace.com)

## Soup and Song Report

In February, Friends of Konza Prairie gathered in the Stone Barn at Konza Prairie Biological Station for another Soup and Song evening. The snow and bone-chilling temperatures that caused us to reschedule the event were a distant memory on the warm and calm evening. It was a beautiful night to come together, share delicious food, and enjoy conversation with fellow prairie supporters.

Guests sampled a variety of homemade soups while reconnecting with friends and meeting others who share an appreciation for the Flint Hills and the important work happening at Konza Prairie, including the efforts supported through the Konza Environmental Education Program. The inviting atmosphere of the Stone Barn provided a comfortable space to reflect, visit, and connect with others who care deeply about the prairie landscape.



Guest speaker Scott Bean got his start in nature photography at the Konza Prairie Biological Station. The Manhattan-based photographer shared stories from across the state and reflected on how time behind the camera has deepened his appreciation of the prairie. His insights highlighted the quiet beauty and perspective that wide-open landscapes can offer. Later in the evening, musician Lora McDonald performed a set of songs that carried through the space, adding a memorable element to the gathering. We extend special thanks to Scott and Lora for sharing their time, talents, and presence with the group!

This evening was made possible by the dedication of many Friends of Konza Prairie who helped plan, prepare food, and organize the event. Their generosity continues to make gatherings like this possible and is a true example of community building community. Thanks to everyone's support, this year's Soup and Song was another memorable celebration of the prairie and the people who care for it!





@FriendsofKonzaPrairie



@friends\_of\_konza\_prairie



[keep.konza.k-state.edu/fokp](http://keep.konza.k-state.edu/fokp)

### The KPBS Staff:

**Director John Blair, Ph.D**

**Assistant Director Eva Horne, Ph.D.**

**Director of Education Jill Haukos**

**Assistant Environmental Educator Monica Shaffer**

**KPBS Project/Site Manager Patrick O'Neal**

**Administrative Assistant Christy O'Neal**

**FOKP Membership Manager Janette Gelroth**

The Friends of Konza Prairie (FOKP) promote the interests of Konza Prairie Biological Station as they pertain to its mission of Research, Education and Conservation. Membership in FOKP is open to all individuals, groups and businesses that share an interest in the common goal of supporting the Konza Prairie Biological Station.

For FOKP membership inquiries, contact Janette Gelroth at 785-587-0381 or [friendsofkonza@gmail.com](mailto:friendsofkonza@gmail.com).

### The FOKP Executive Board:

**President** Sarah Jackson (3-yr term expiring Dec. 2026)

**Treasurer** Conni Briggs (3-yr term expiring Dec. 2027)

**Secretary** Mike Haddock (3-yr term expiring Dec. 2026)

### The FOKP Board Members:

Nellie Hill-Sullins (3-yr term expiring 2028)

Kathy Hund (3-yr term expiring Dec. 2027)

Ryan Klataske (3 yr. term expiring Dec. 2026)

Brian McCornack (3 yr. term expiring Dec 2026)

Amy Meng (3 yr. term expiring Dec. 2026)

Amber Myers (3-yr term expiring Dec. 2027)

Susan Religa (3-yr term expiring Dec. 2028)

Jessy Wilkes (3-yr term expiring Dec. 2027)

Mollie Wold (3 yr. term expiring Dec. 2028)

### Ex Officio and Honorary Members

KPBS Director John Blair, KEEP Director Jill Haukos, KPBS Site Manager Patrick O'Neal, FOKP Membership Manager Janette Gelroth, FOKP Historian Joe Gelroth, Honorary Board Members Stormy Kennedy and Dr. Valerie Wright

Friends of Konza Prairie  
Kansas State University  
Division of Biology,  
116 Ackert Hall  
Manhattan, KS 66506-4901  
785-587-0441  
#308



## MISSION

Konza Prairie Biological Station (KPBS) is a native tallgrass prairie preserve owned by The Nature Conservancy and Kansas State University and operated as a research station by the Division of Biology. The Friends of Konza Prairie (FOKP) promotes the interests of KPBS as they pertain to its mission of research, education and conservation.

## FOKP Members

This list designates NEW and RENEWING members who have joined since the last newsletter.

**QUESTIONS REGARDING MEMBERSHIP SHOULD BE SENT TO [friendsofkonza@gmail.com](mailto:friendsofkonza@gmail.com)**

### Student

Abby Denning  
Mikayla Hargis  
Richard L. Hartman

### Little Bluestem—Individual

Mary P. Barkley  
Nova Clarke  
Kelly & Bert Coleman  
Marc A. K. Johnson  
Claudia Luthi  
Deb Martin  
Holly McCaslin  
Cynthia Rhodes & Brian Martin  
Cindy Vadakin  
Graham Zurschmiede

### Little Bluestem—Family

Lynette Allen  
Tony Ballard  
Martha Blackman  
Roger & Shelley Braden  
John & Rita Cassida  
Lacey Esau  
Julie Goldner  
Lisa Grossman  
Cole & Sarah Hawver  
Rick & Barbara Johnson

Bruce & Brigitte Kidder  
Roger Kinderknecht  
John Kirkham  
Patrick & Diane Knight  
Tom & Andrea Krauss  
Donna & Nick Krueger  
Donna McCallum  
Mary & Taylor McFall  
Maureen & Jan Olewnik  
Monica Rice  
Phillip & Kim Richards  
Ruth & Glenn Rodden  
Patrick Schaub & Debra Rodenbaugh-Schaub  
Phil & Monica Shaffer  
Mary Sutton  
Jim & Stacey Warner  
Kelly Yarbrough & Jeff Sackrider

### Big Bluestem

Tom & Jody Boeding  
Lawrence Burnham & Melissa Houston  
James & Susan Copeland  
Walter Dodds & Dolly Gudder  
Nina Gamotis-Middleton  
Mike & Toni Haddock

Gary & Carolyn Haden  
Dave & Jill Haukos  
Daniel & Susan Higgins  
Tom Hulbert & Nancy Scheer  
Gary & Cindy Jeffrey  
Kail & Becky Katzenmeier  
David & Bobbie Kromm  
Glen Lierly  
Bill Pallett  
Bill & Carol Powers  
Martha & Dick Seaton  
Phyllis & Warren Slocombe  
Alan & Joan Smith  
Chris & Stacy Stewart

### Flint Hills

Lyle & Chris Butler  
Dan Francke & Karen Wells  
Amanda P Gaulke  
Marty & Sharon Gurtz  
Steve Hulbert Family  
Michael & Linda Jones  
John Laffoon  
Pat & Mary Pat Petrie  
Hannah & Andrew Purviance  
Jean Shackelford

### Prairie Chicken

Terry & Ginny Arthur  
Jeremy & Heidi Beezley  
Kary Bloom  
Mark & Terrie Boguski  
Mark Hulbert & Merideth Tomlinson  
Phil Jeffries  
Julia Jilek  
Pat & Kelly Landes  
Jay & Doris Merrill  
Beth Montelone  
Kay Russell  
David & Jennifer Saab  
Stefanie Workman  
Keith & Sue Ann Wright

### Bison

Shawna Bronson  
Mark & Ashton Buckwalter  
Mike & Connie Butler  
Forrest Chumley & Barbara Valent  
Jan Davis  
Diane Herian  
Duane Miksch, DVM  
Jeff & Ginny Petersen  
Ken & Kris Stafford  
Caroline Thorington  
Valerie Wright

### Tallgrass

Allan Foster & Mary Galligan  
Joe & Anne Jezak  
Jim Koelliker & Carole Ann Harbers  
Sue Maes & Dennis Hemmendinger  
Jacque Staats & Dick Oberst

### Community Memberships

Katelyn Aguiar  
Juan Avila-Lopez  
Chantal Hayes  
Robin Henderson  
Tara Hollis  
Jonathan Kringen  
Nicole McCallister  
Shelby Mitchell  
Atreyu Neyhart  
Amber Parrish  
Dion Pettitt  
Denise Ramos  
Craig Royse  
Neal Secrist  
Thomas Shull  
Cara Steffen  
Trent Thomas  
Alvin Torres  
William Vann  
Dwayne West  
Joseph Wilson

**THANK YOU!**